



CSTO

Symptoms	No. of Pts.	(%)
Weight Regain	18	37.50
Outlet Obstruction	17	36.42
Pain	9	18.75
Bleeding	7	14.58

Table 1. Presenting symptoms of Band Erosion



CSTO

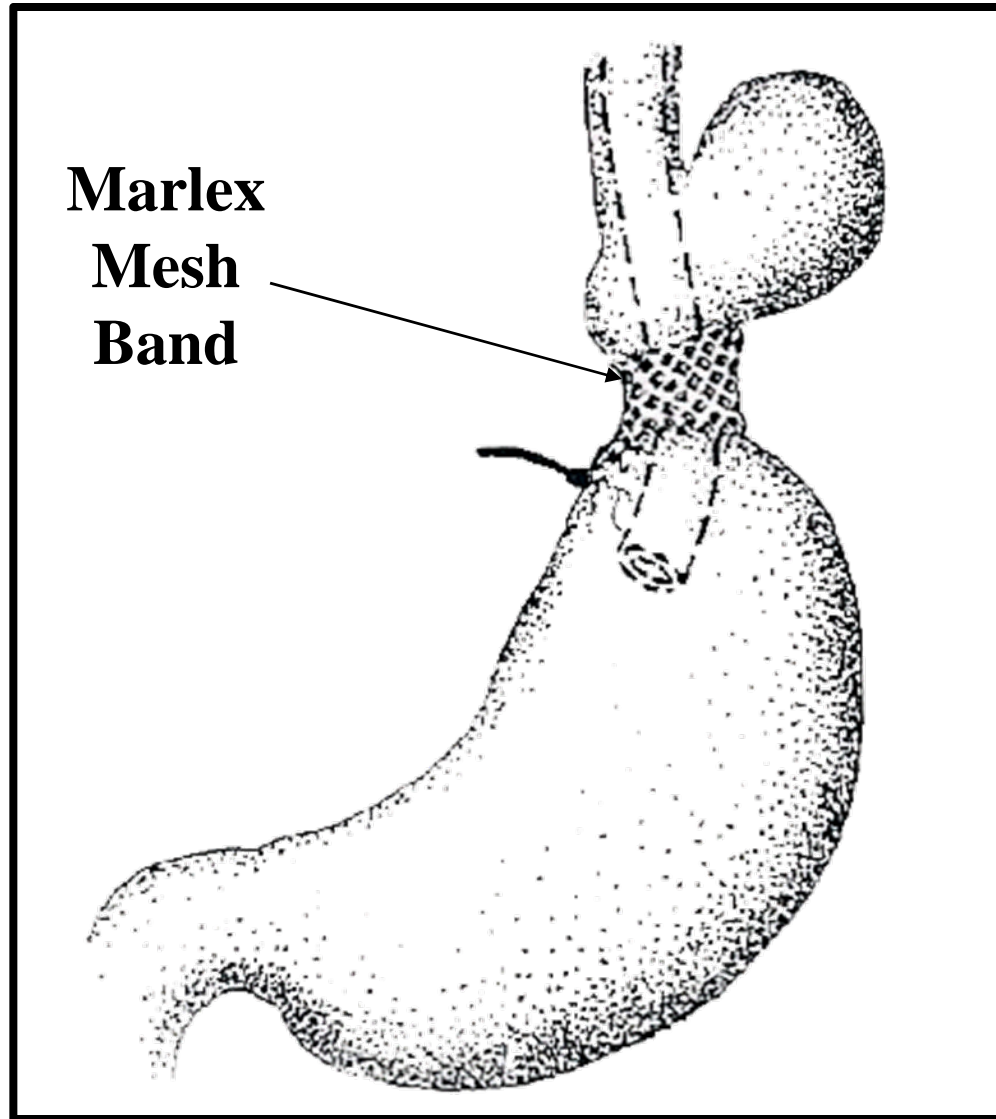


Fig.1 Wilkinson's Band , 1978



CSTO

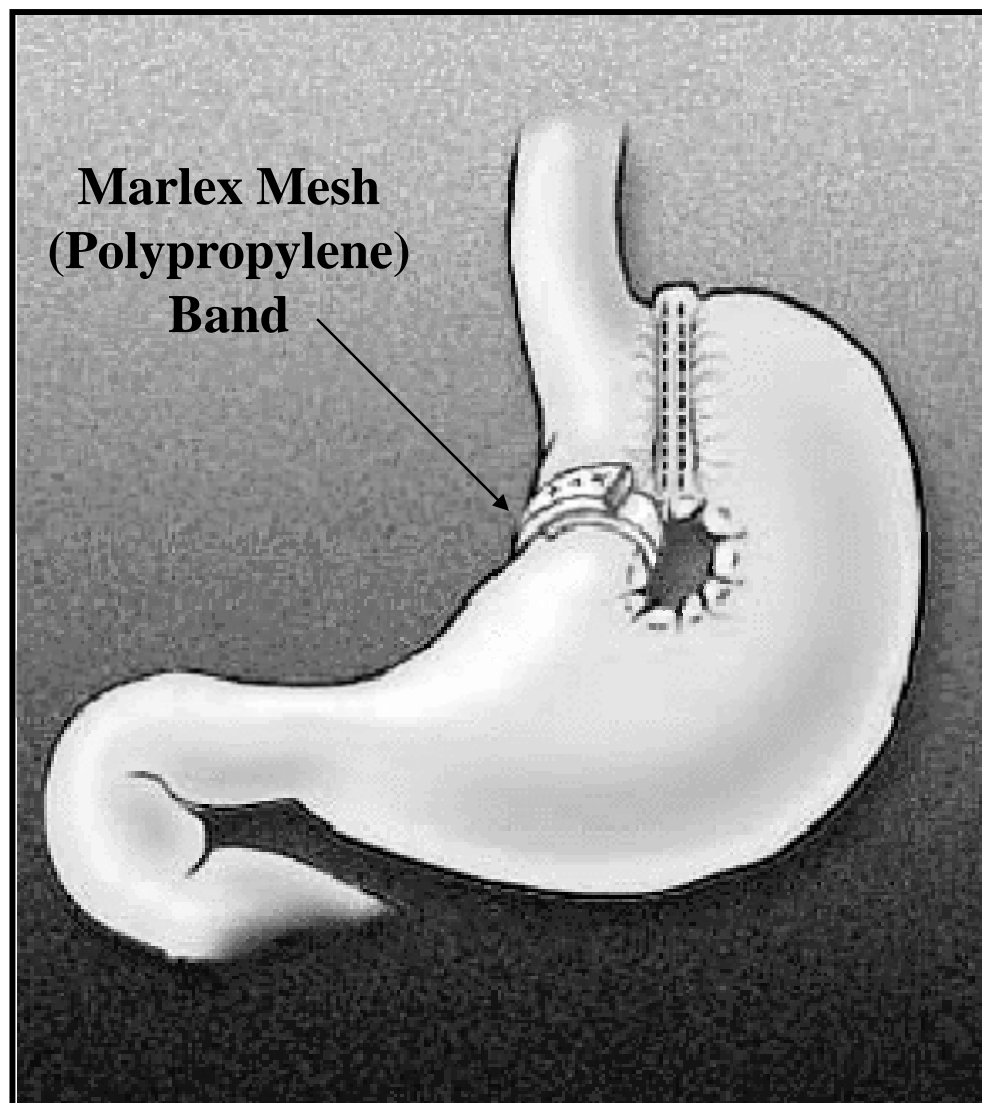


Fig.2: Vertical Banded Gastroplasty (VBG) (Mason, 1980)

**Silastic
Tubular
Band**

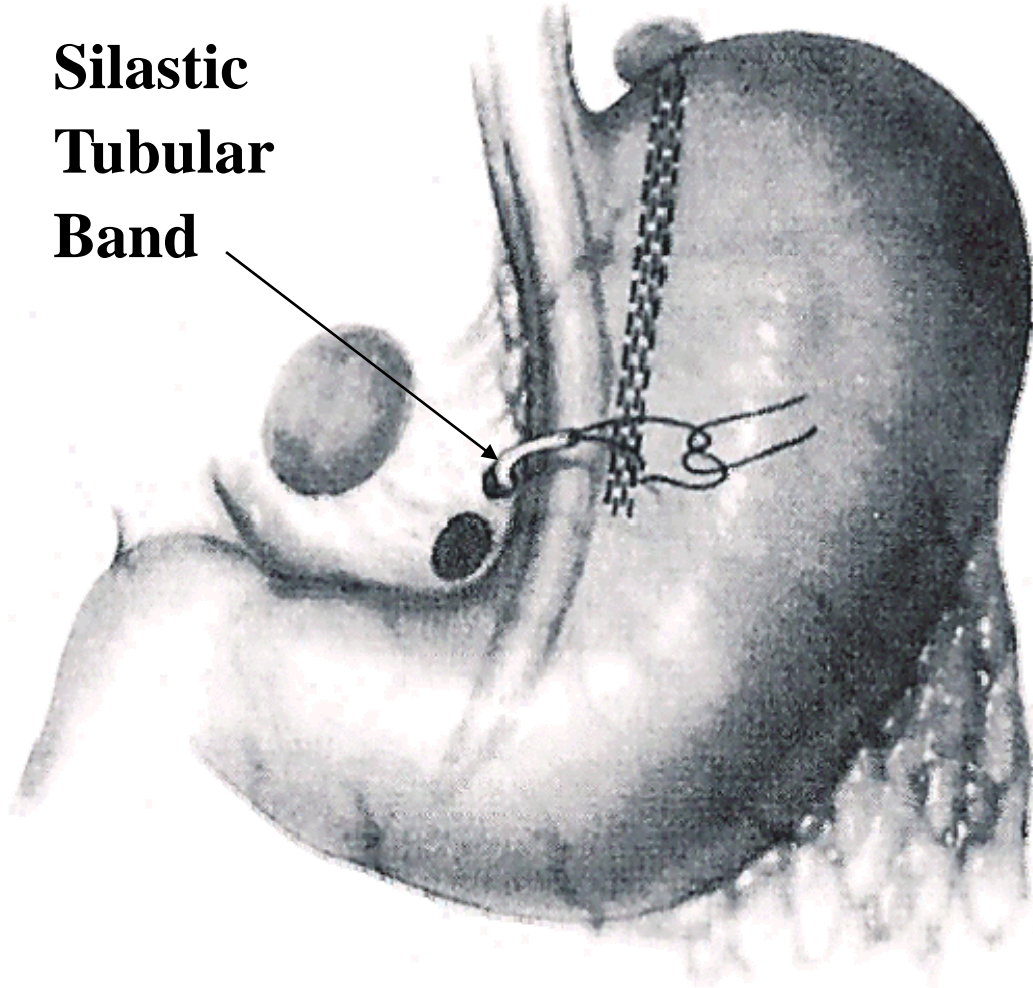


Fig.3: Vertical Ring Gastroplasty (VRG) (Laws, 1981)



CSTO

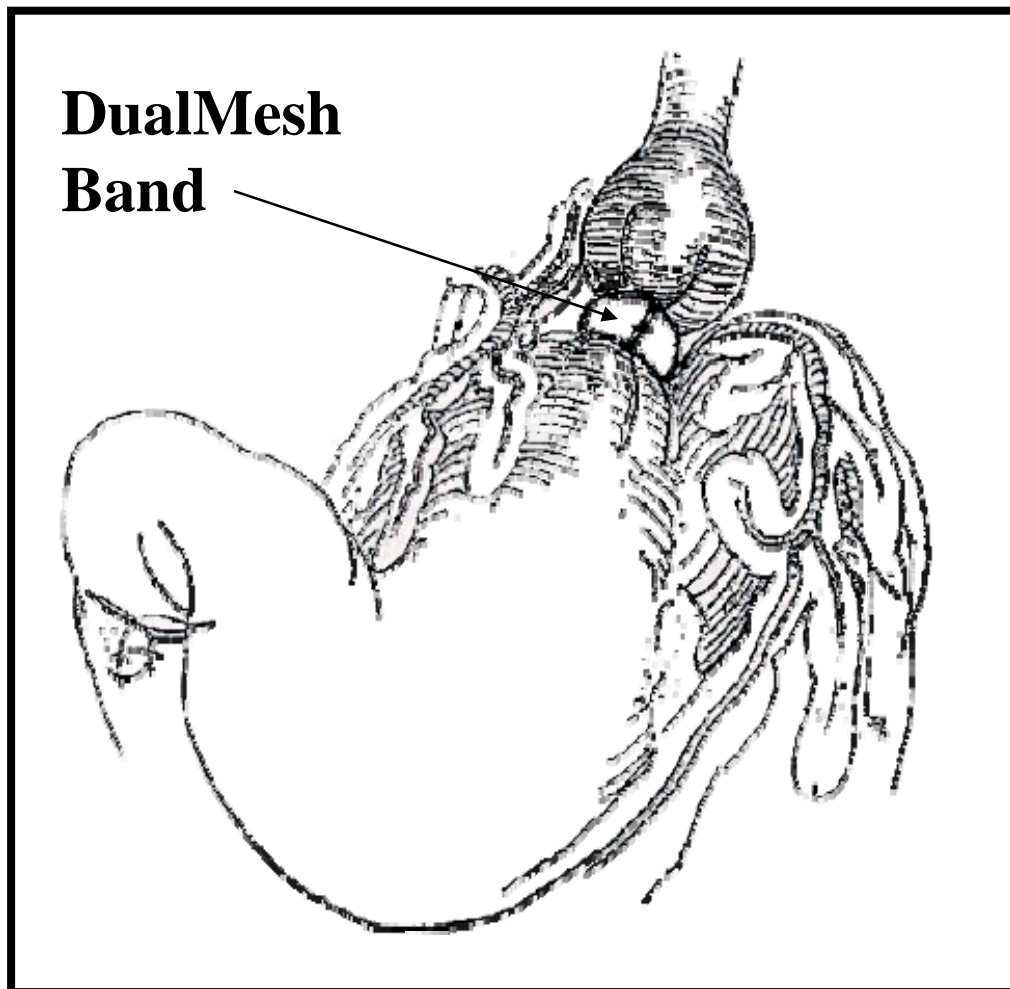
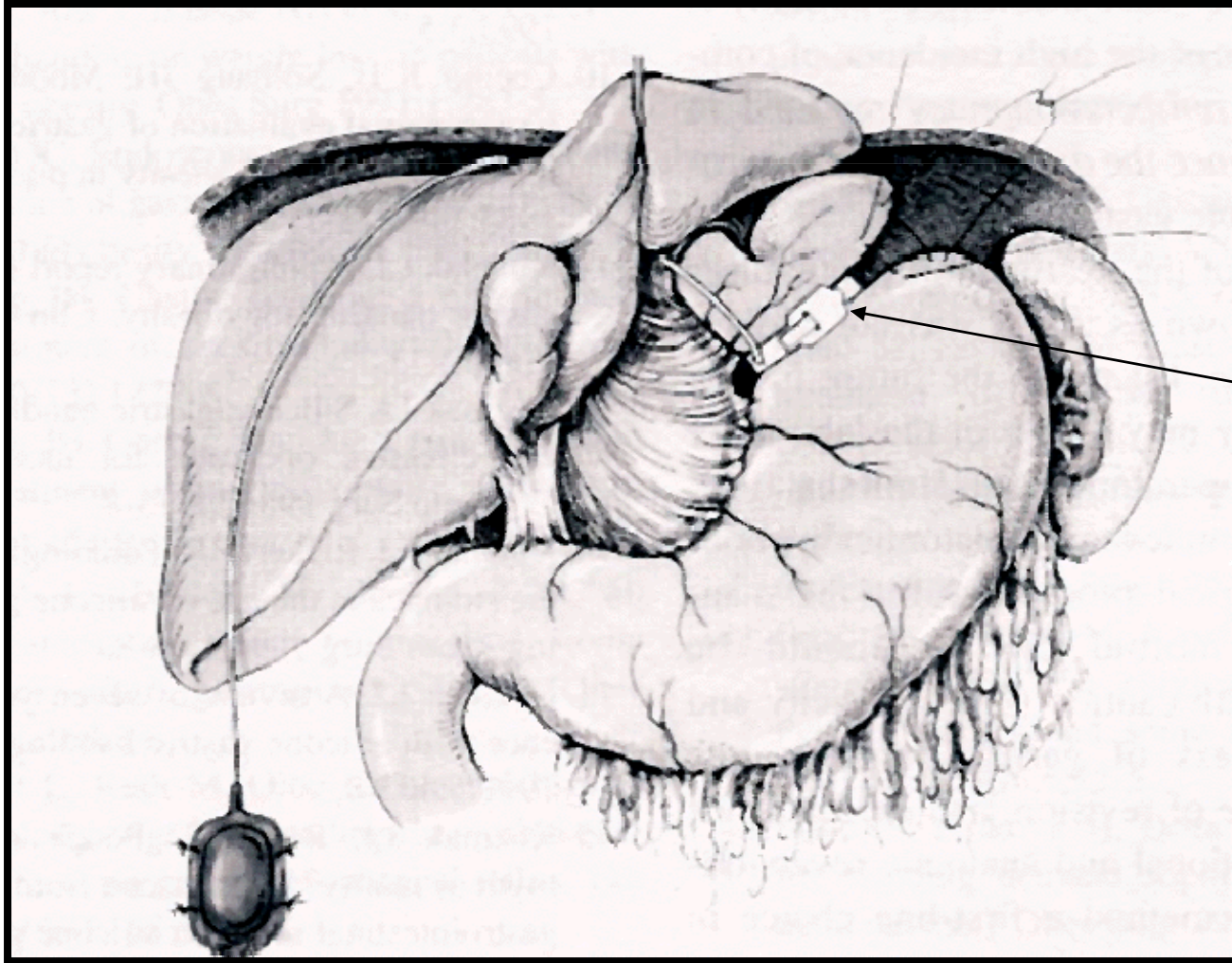


Fig.4. Molina's Band , 1980



CSTO

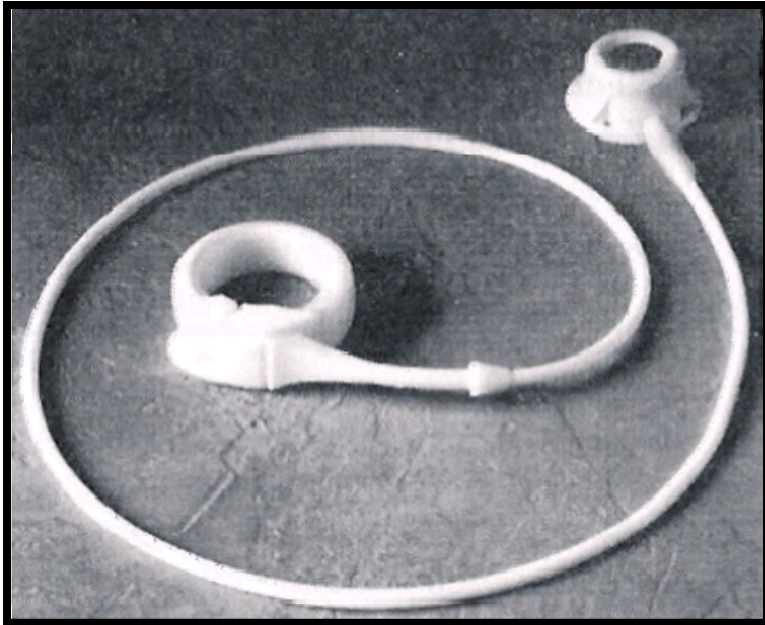


Band

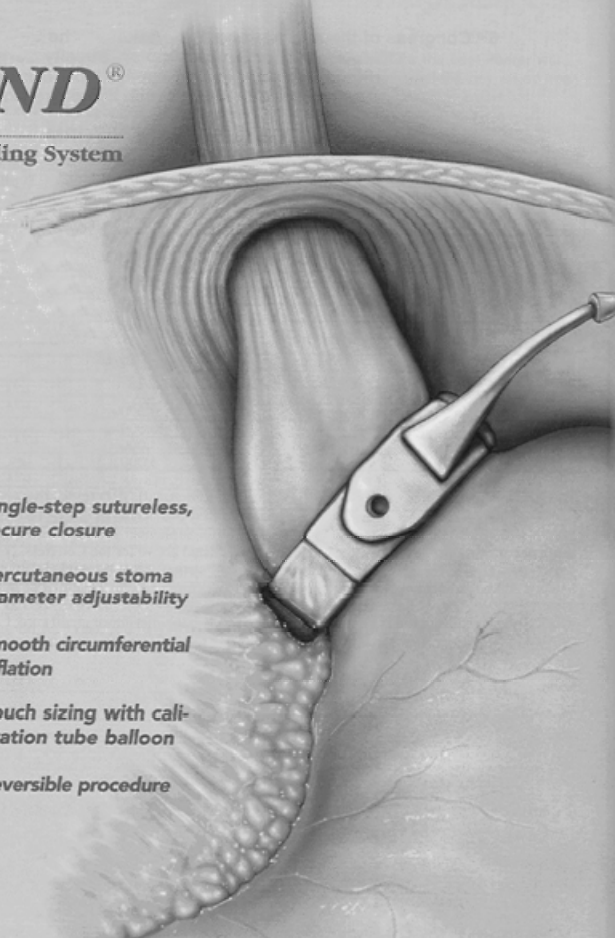
Fig.5. Inflatable Gastric Band (Kuzmak)



CSTO



LAP-BAND[®]
Adjustable Gastric Banding System



The diagram illustrates the surgical placement of the Lap-Band around the upper part of the stomach. A surgical instrument is shown adjusting the band. A list of features is provided:

- Single-step sutureless, secure closure
- Percutaneous stoma diameter adjustability
- Smooth circumferential inflation
- Pouch sizing with calibration tube balloon
- Reversible procedure

BioEnterics

Fig.6. Adjustable Gastric Band (Lap-Band)

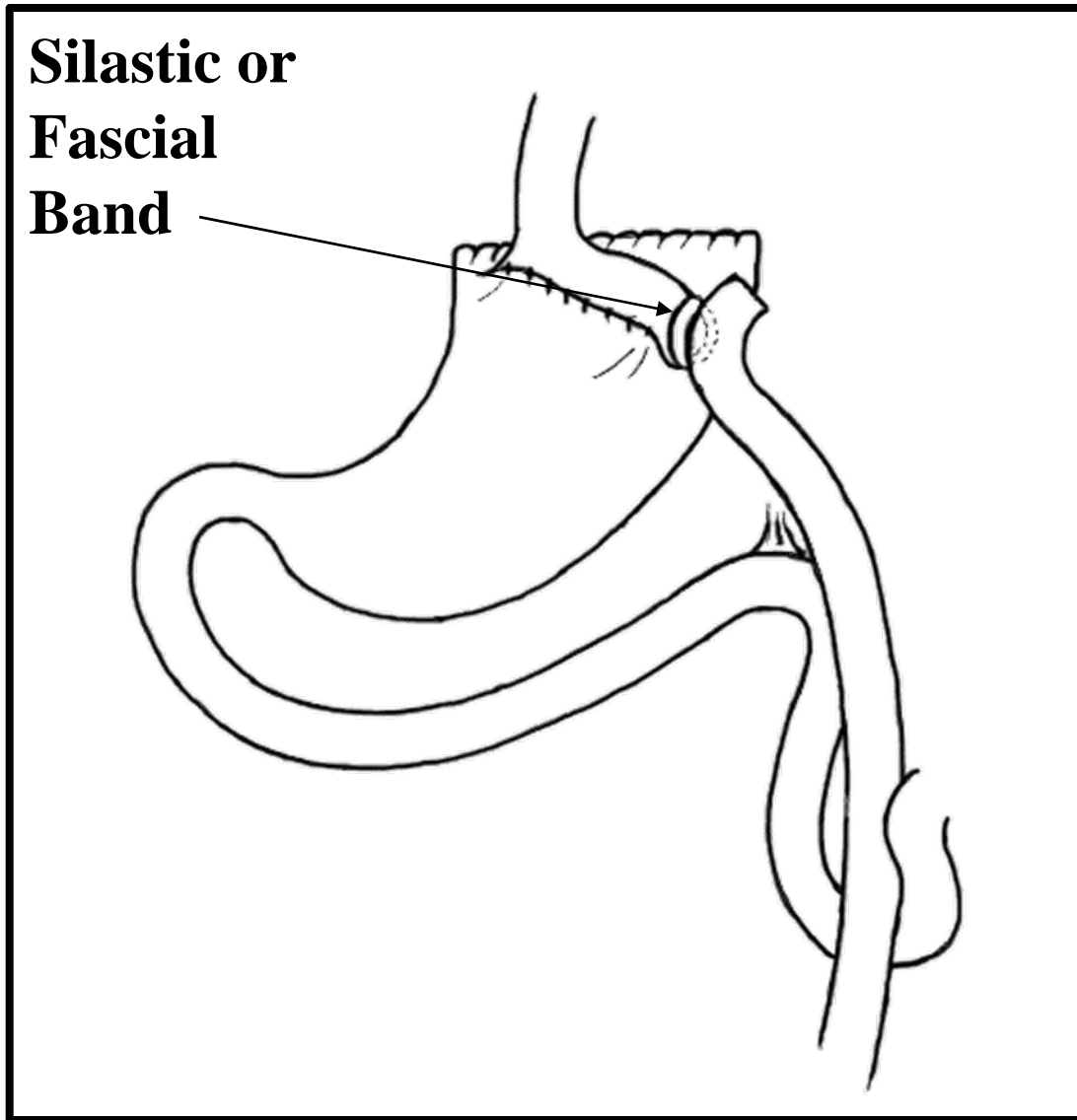


Fig.7: Linner's Band , 1984



CSTO

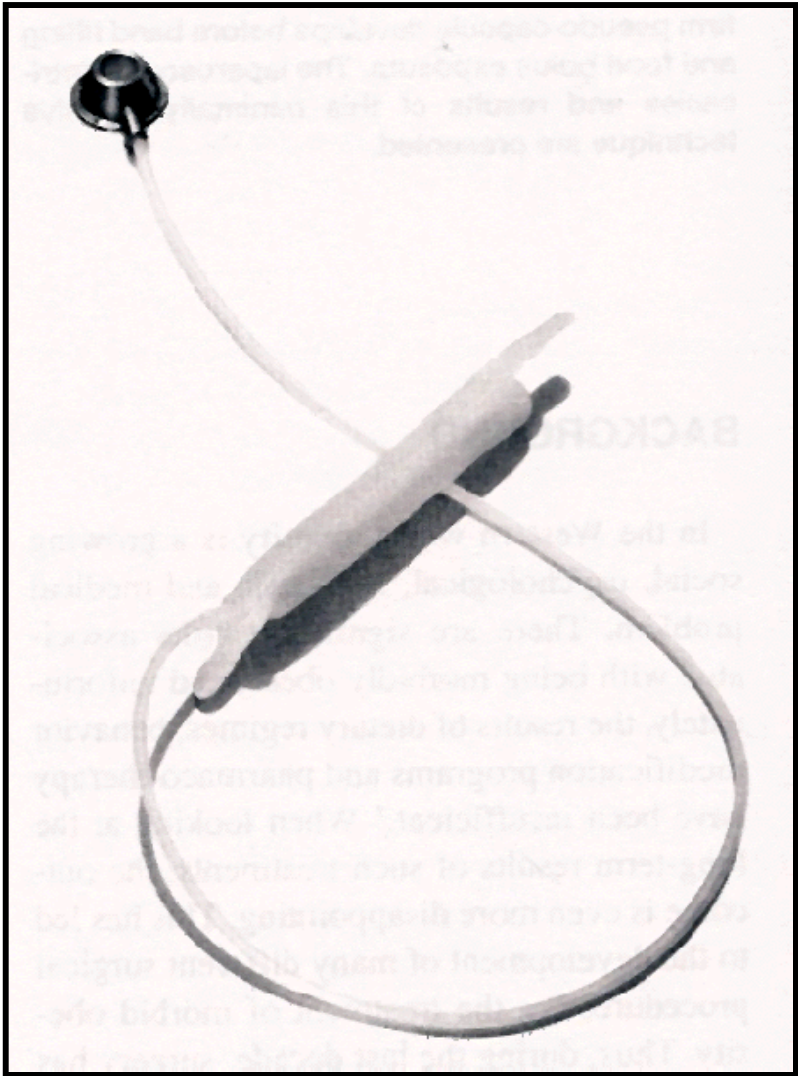


Fig.8: Swedish Adjustable Gastric Band (Obtech)



CSTO

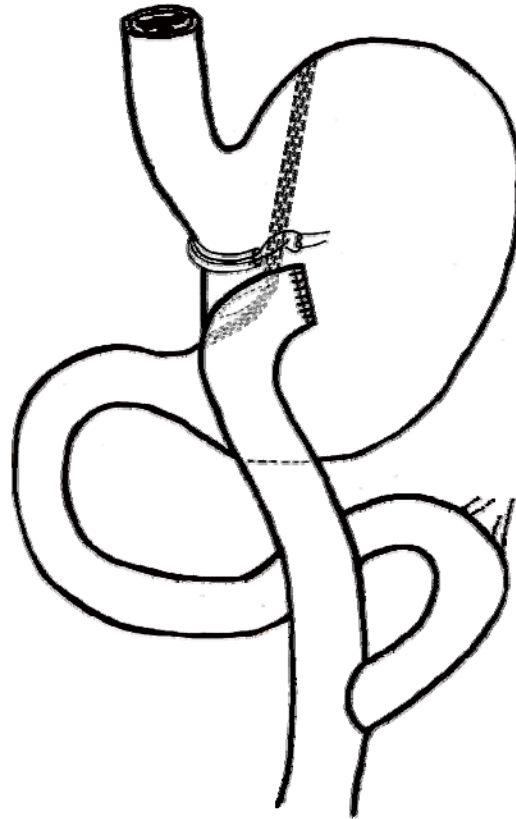


Fig. 9: Silastic Ring Vertical Banded Gastric Bypass
(SRVGBP). (Fobi 1986)

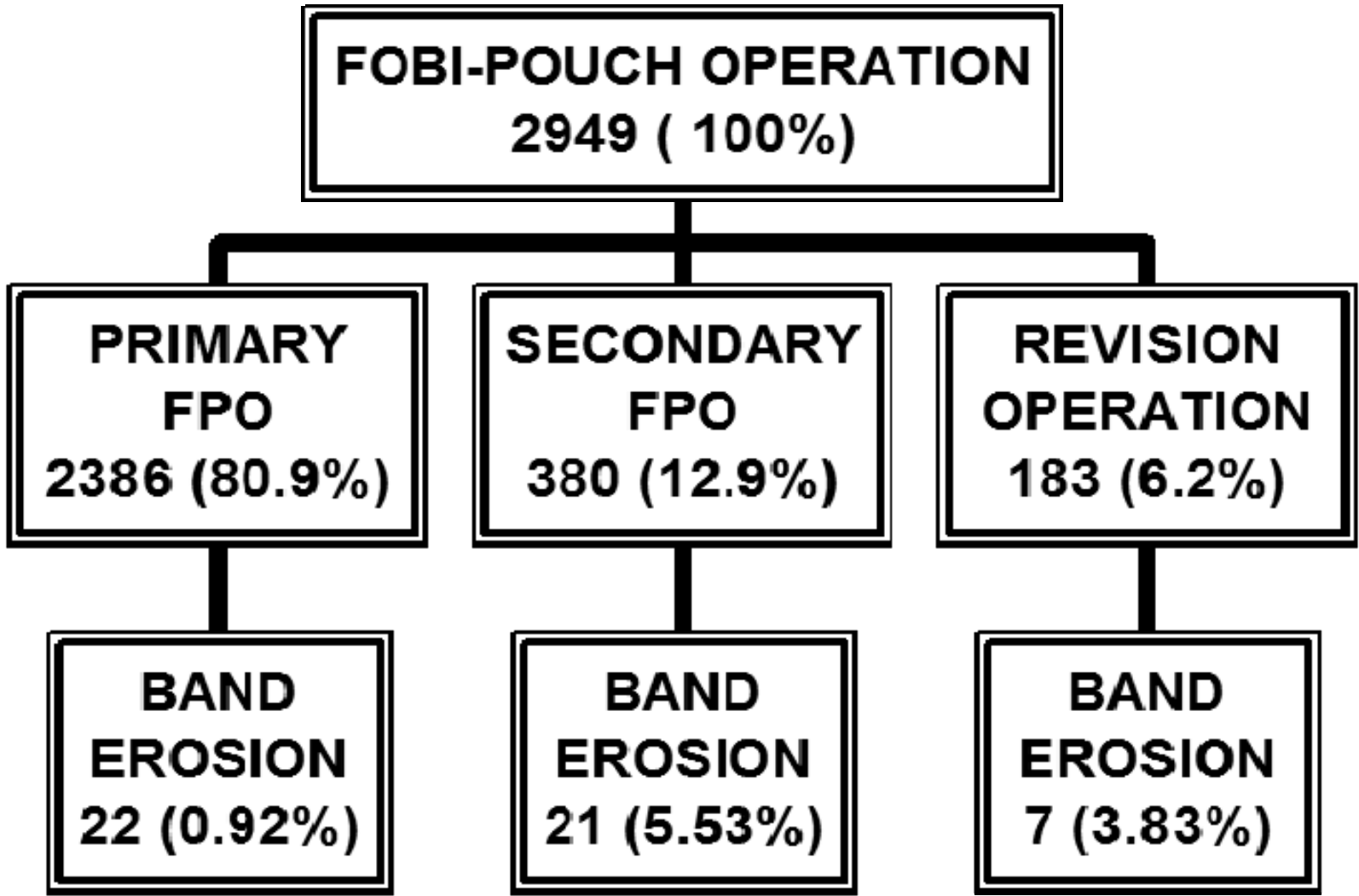


Fig.11: Incidence of Band Erosion (May 1992- May 2001).



**Total Band Erosion
48 (100.0%)**

**EXPECTANT
TREATMENT
8 (16.67%)**

**ENDOSCOPICAL
REMOVAL
14 (29.17%)**

**SURGICAL
TREATMENT
26 (54.17%)**

**BAND
REMOVAL
12 (25.0%)**

**BAND REMOVAL AND REVISION
TO DRYGBP WITHOUT BAND
REPLACEMENT
6 (12.5%)**

**BAND REMOVAL AND
REVISION OF
GASTROENEROSTOMY
8 (16.67%)**

**DRYGBP
4 (14.58%)**

**REVISED TO
RYGBP
2**

**WITH BAND
REPLACEMENT
7**

**WITHOUT
REPLACEMENT
1**

**REVISION TO
DRYGBP
2**

**BAND ERODED
2**

**BAND
REPLACED
5**

Fig. 12: Treatment of Band Erosion



CSTO



Fig.13-a: X-ray of the stoma, s/p FPO with subsequent Band Erosion



Fig.13-b: X-ray of the stoma, s/p FPO without Band Erosion



CSTO

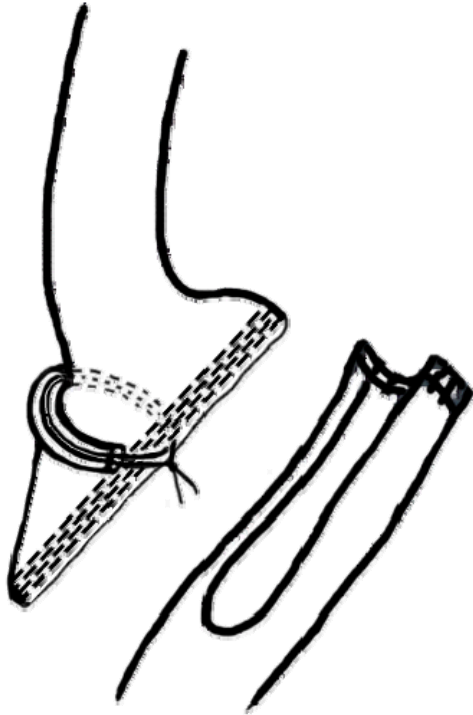


Fig.14-a: Band placement up to 1998

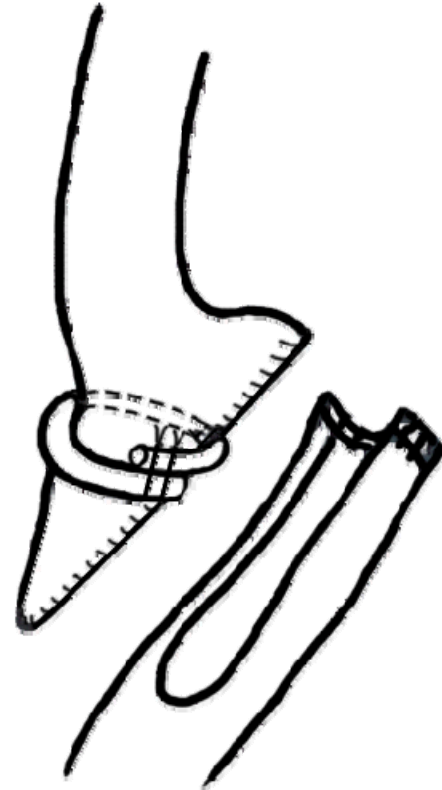


Fig.14-b: Band placement after 1998

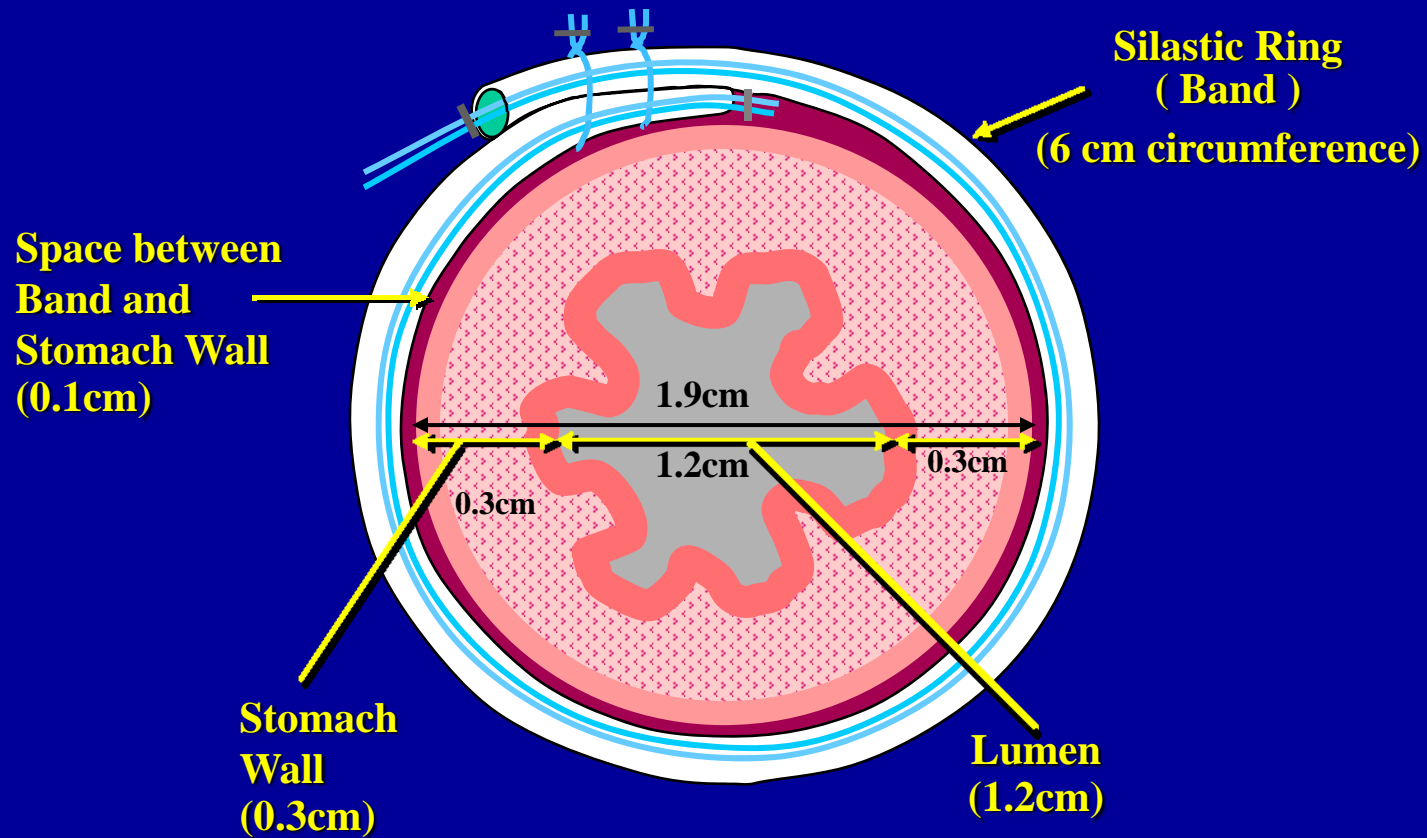


Fig. 15: Cross section of Silastic Ring Band and Pouch.



CSTO

ERODED SILASTIC RING

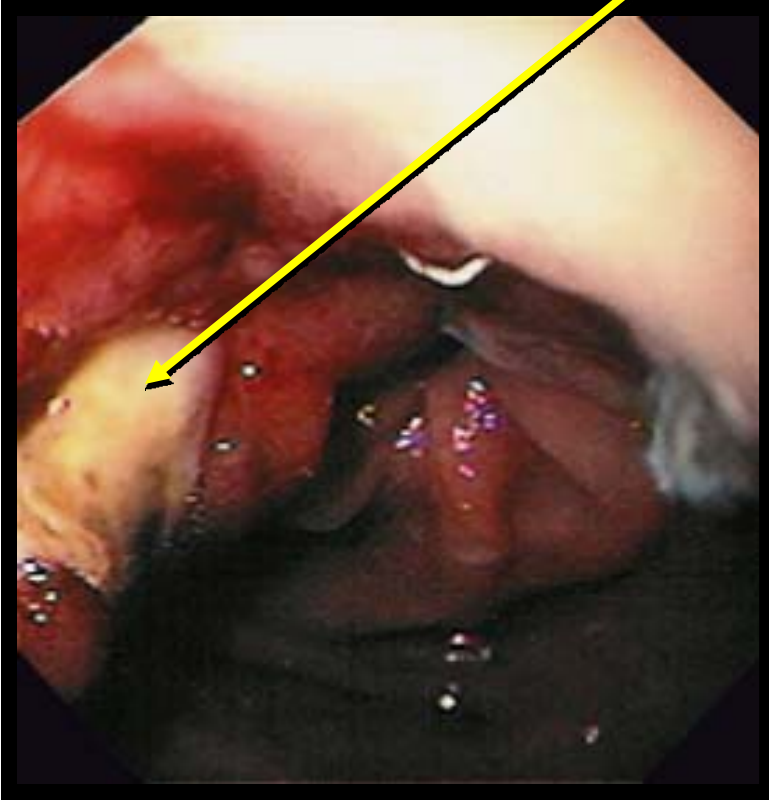


Fig.16-a: Band Erosion - partial erosion

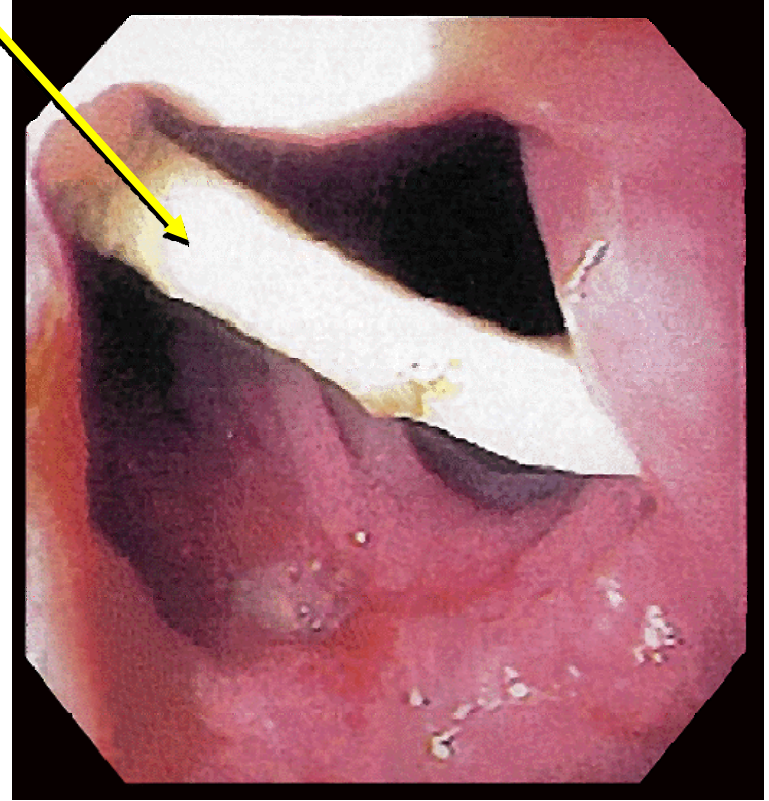


Fig.16-b: Band Erosion - complete erosion